



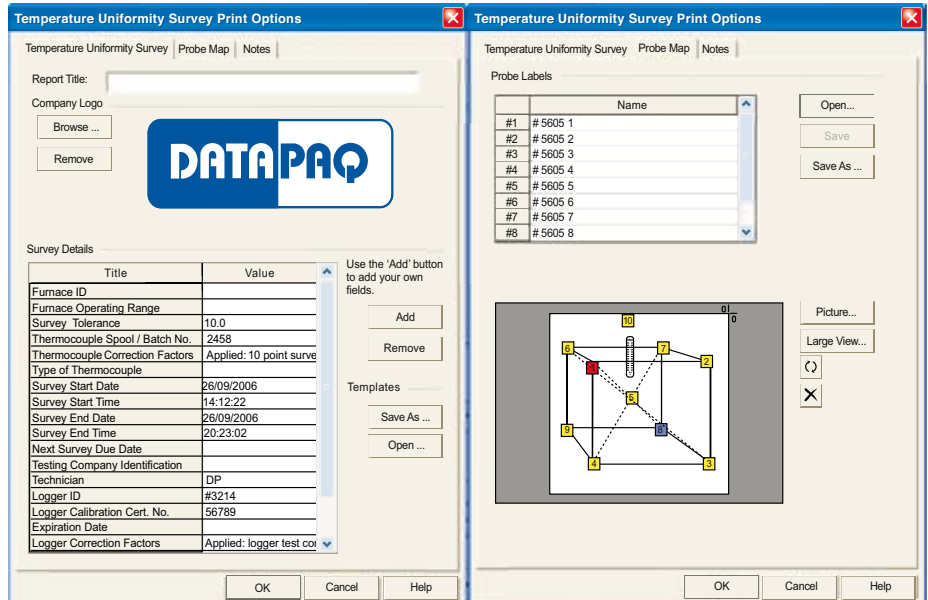
A Fluke Company

insight™ Survey Software

for Furnace Tracker®

New and compliant with AMS 2750E

AMS 2750E Compliance



Confirm your furnace is in compliance with AMS 2750E

The DataPaq® Insight™ Survey Software for Furnace Tracker® confirms compliance to all required specifications, plus additional features to make conformity easy.

AMS 2750E Requirements

- **Wizard-driven Setup Logger Connection Factors** – Set up factors and save them for easy application to future surveys. Prompts direct you to perform this required step.
- **Calculate Stability** – Over-shoot alarm and three selectable alerts tell you when stability is reached.
- **Correction Factors** – Software confirms both data logger and thermocouple corrections have been applied.
- **Complete AMS 2750E documentation** – One-click full report saves time while maintaining consistency.
- **Password Protection** – Meets required security requirement.
- **Import from Clipboard** – Easily import control thermocouple data into survey paqfile.
- **Full Audit Trail** – Guaranteed traceability of data.
- **ASTM E29 Rounding** – Insight applies rounding according to ASTM E29 to fully comply with Revision E.

FEATURES

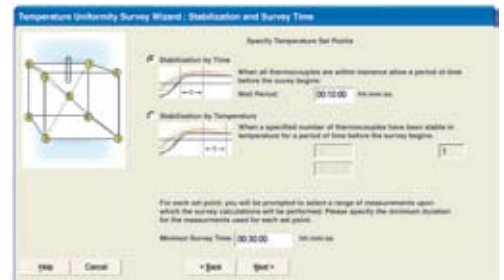
- **Controlling Specification** – Compares controlling specification tolerances with survey results to determine furnace class.
- **Hottest and Coldest Points Identified** – An instant visual indication of the hottest and coldest points of the furnace highlighted both on-screen and in the printed report.
- **Recovery Time Data** – Provides an automatic calculation of the time between the first and last thermocouple entering the lower tolerance band.
- **Area Under Curve Calculation** – Eliminates the need to export the data to a spreadsheet.
- **Restrict Display Intervals** – Allows user to print longer intervals for a shorter report.
- **Print to PDF** – Share survey report data easily and efficiently



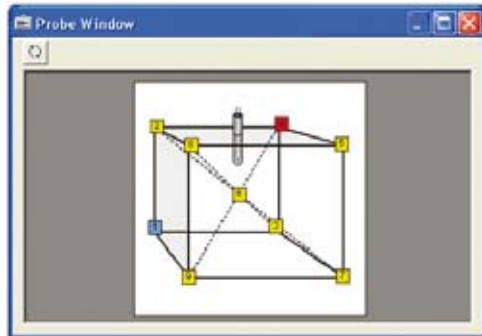
KEY FUNCTIONS



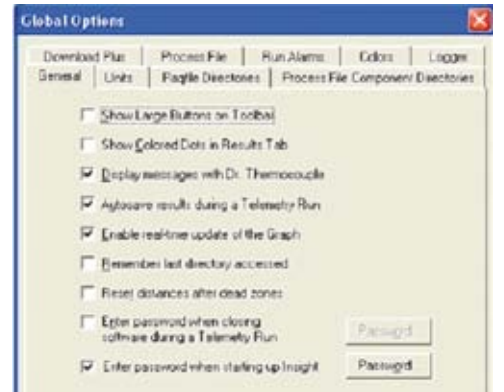
Apply Logger Correction Factors
Wizard prompts users to apply mandatory instrument correction factors during setup



Stabilization and Survey Time
Calculate stability by time or temperature



Probe Window
Display hottest and coldest points around the furnace



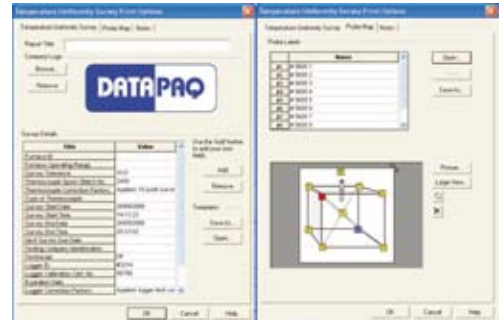
Global Options
Password protection as required also provides extra security

Time (hh:mm:ss)	#6 (°C)	#7 (°C)	#8 (°C)	#9 (°C)	#10
05:00:00	1025.8	1024.8	1025.8	1025.8	
05:10:00	1027.8	1026.8	1028.3	1028.8	
05:20:00	1026.4	1025.8	1027.5	1027.9	
	2.0	2.0	2.5	2.0	

Correction Features Applied
Software confirms both data logger and thermocouple corrections have been applied

Minimum computer specifications

- Windows XP, Vista (32 and 64-bit), Windows 7 (32 and 64-bit)
- 512MB RAM (1GB RAM for 32-bit Vista and Windows 7, 2GB RAM for 64-bit Vista and Windows 7)
- 1 GHz Processor
- 1024 x 768 screen resolution
- USB port and DVD drive



Temperature Uniformity Survey Print Options
Full documentation of all AMS 2750E requirements

The Worldwide Leader in Temperature Profiling



Europe and Asia
DATAPAQ Limited,
Deanland House, 160 Cowley Road,
Cambridge CB4 0GU, UK
Tel: +44 (0)1223 423 141
Fax: +44 (0)1223 423 306
E-mail: sales@datapaq.co.uk
Web: www.datapaq.com

North and South America
DATAPAQ,
3 Corporate Dr. Unit 1
Derry, NH 03038, USA
Tel: +1 978 988 9000
Fax: +1 978 988 0666
E-mail: sales@datapaq.com
Web: www.datapaq.com

Germany
DATAPAQ,
Tel: +49 5733 9107 0
Fax: +49 5733 9107 27
E-mail: sales@datapaq.de
Web: www.datapaq.de



www.datapaq.com

© 2013 Datapaq (2127 Rev B1) 2/2013
Datapaq, the Datapaq logo and FurnaceTracker
are registered trademarks of Datapaq.
Specifications subject to change without notice.